

---

# LINEA SIL

---

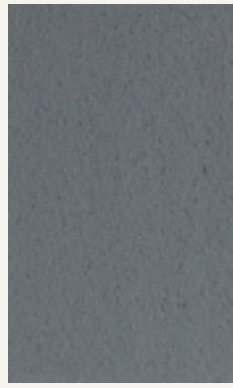
Pitture e rivestimenti silossanici ad elevate prestazioni  
Highly performing siloxane paints and coatings



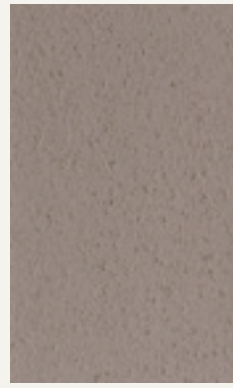
novacolor™  
I colori dell'Architettura



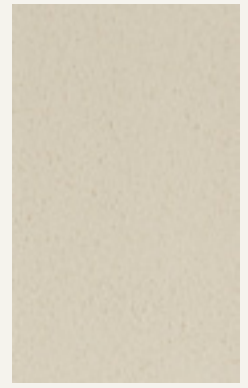
18100



18104\*



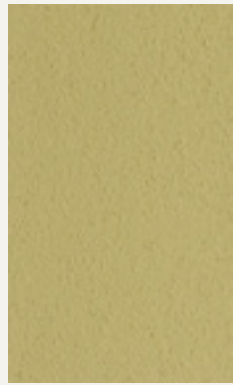
18108



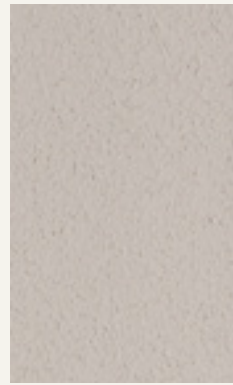
18112



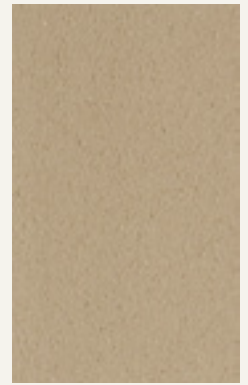
18101



18105



18109



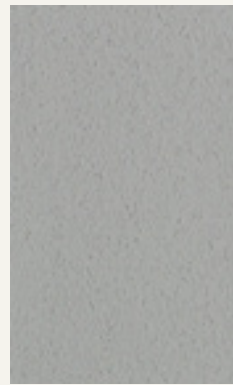
18113



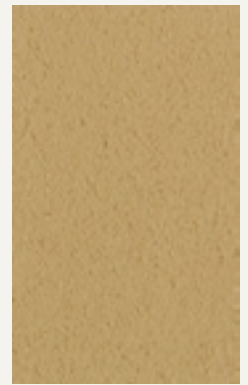
18102



18106



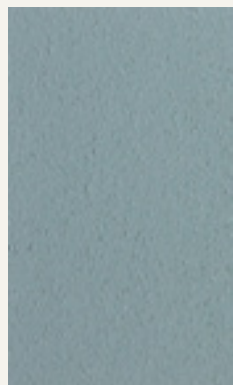
18110



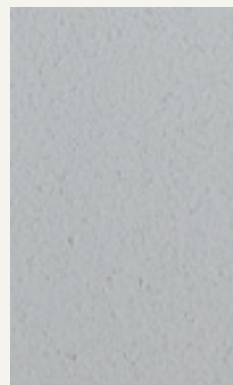
18114



18103



18107



18111



18115\*

# LINEA SIL

## IT Pitture e rivestimenti silossanici ad elevate prestazioni

LINEA SIL garantisce un'eccezionale protezione ed idrorepellenza, lasciando inalterata la permeabilità al vapore acqueo del supporto trattato.

LINEA SIL è composto da:

NOVASIL F, microrivestimento acrilsilossanico anti-alga con farina di quarzo.

RUSTIKSIL FEIN e MEDIO, rivestimento a spessore acrilsilossanico, anti-alga, a grana fine o media.

INTOSIL FINE e MEDIO, intonachino acrilsilossanico anti-alga, a grana fine o media.

Rese:

NOVASIL F: 4-5 m<sup>2</sup>/l in due strati

RUSTIKSIL FEIN: 1,8-2 Kg/m<sup>2</sup> per singolo strato

RUSTIKSIL MEDIO: 2,2-2,5 Kg/m<sup>2</sup> per singolo strato

INTOSIL FINE: 1,6-2 Kg/m<sup>2</sup> in due strati

INTOSIL MEDIO: 1,75-2 Kg/m<sup>2</sup> per singolo strato

Per maggiori informazioni consultare le rispettive schede tecniche.

## FR Peintures et revêtements siloxanes hautement performants

LINEA SIL garantit une excellente protection et hydroréulsion, sans affecter la perméabilité du support.

LINEA SIL inclut dans sa gamme :

NOVASIL F, peinture acryl siloxane, anti-moisissure.

RUSTIKSIL FEIN et MEDIO, revêtement acryl siloxane, anti moisissure à grain fin et moyen.

INTOSIL FINE et MEDIO, enduit à la chaux acryl siloxane anti-moisissure à grain fin et moyen.

Rendement:

NOVASIL F: 4-5 m<sup>2</sup>/l en deux couches

RUSTIKSIL FEIN: 1,8-2 Kg/m<sup>2</sup> pour chaque couche

RUSTIKSIL MEDIO: 2,2-2,5 Kg/m<sup>2</sup> pour chaque couche

INTOSIL FINE: 1,6-2 Kg/m<sup>2</sup> pour chaque couche

INTOSIL MEDIO: 1,75-2 Kg/m<sup>2</sup> pour chaque couche

Pour plus d'informations, consulter les fiches techniques.

## EN Highly performing siloxane paints and coatings

LINEA SIL offers high protection and water repellence, without affecting the permeability of the substrate.

LINEA SIL comprehends a wide range of products:

NOVASIL F, grainy acryl-siloxane paint, anti-mould.

RUSTIKSIL FEIN and MEDIO, one coat only acryl-siloxane decorative coating, anti-mould, with fine or medium grain.

INTOSIL FINE and MEDIO, stone-looking acryl-siloxane coating, anti-mould, with fine or medium grain.

Yield:

NOVASIL F: 4-5 m<sup>2</sup>/l in two layers

RUSTIKSIL FEIN: 1,8-2 Kg/m<sup>2</sup> for each layer

RUSTIKSIL MEDIO: 2,2-2,5 Kg/m<sup>2</sup> for each layer

INTOSIL FINE: 1,6-2 Kg/m<sup>2</sup> in two layers

INTOSIL MEDIO: 1,75-2 Kg/m<sup>2</sup> for each layer

For more information, please check technical data sheets.

## DE Schimmel - und algenbeständige acryl-siloxan-wandbeschichtung und dispersionsfarben

LINEA SIL bietet Acryl-Siloxane-Wandbeschichtung für Außenbereiche, die eine hohe.

Wasserabweisung und gute Dampfdurchlässigkeit besitzen, mit Kompakteffekt an. Sie bildet eine raue Schicht von beachtlicher Stärke, die beständig ist gegen die Angriffe der Witterungseinflüsse.

LINEA SIL besteht aus:

NOVASIL F, Schimmel-und algenbeständige Mikrobeschichtung.

RUSTIKSIL FEIN und MEDIO, Schimmel-und algenbeständige Außenputz.

INTOSIL FINE und MEDIO fein- und mittelkörnige Wandbeschichtung für den Außenbereich.

Ergiebigkeit:

RUSTIKSIL FEIN: 1,8-2 Kg/m<sup>2</sup> je Schicht

RUSTIKSIL MEDIO: 2,2-2,5 Kg/m<sup>2</sup> pro Schicht

INTOSIL FINE: 1,6-2 Kg/m<sup>2</sup> in zwei Schichten

INTOSIL MEDIO: 1,75-2 Kg/m<sup>2</sup> pro Schicht

Für mehrere Infos bitte technisches Merkblatt anfordern.



RUSTIKSIL FEIN 18101



RUSTIKSIL MEDIO 18108



INTOSIL MEDIO 18105



INTOSIL FINE 18106

\*I colori contrassegnati non sono utilizzabili su superfici ETICS (sistema di isolamento termico a cappotto).  
Le tonalità qui riprodotte, pur avvicinandosi a quelle di fornitura, sono indicative. Per una corretta lettura dei colori si raccomanda di consultare questa cartella alla luce solare.

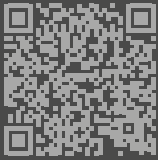
*The colors marked with \* cannot be used as final coating over ETICS (thermal insulating system).  
The colour shades herein reproduced are purely indicative, as small variations may occur. For a correct reading of the colours it is recommended to examine the catalogue under direct sunlight.*



# LINEA SIL



www.novacolor.it



firedot

03/2018

N000014

**novacolor**<sup>TM</sup>  
I colori dell'Architettura

NOVACOLOR srl - 47122 Forlì - Italia  
Tel +39 0543 401840 - fax +39 0543 414585  
Via U. Aldrovandi, 10 - info@novacolor.it



NOVACOLOR is committed to reduce the environmental impact by producing friendly materials.

Made in Italy

AZIENDA CON SISTEMA  
DI GESTIONE QUALITÀ  
CERTIFICATO DA DNV GL  
= ISO 9001 =

COMPANY WITH  
QUALITY SYSTEM  
CERTIFIED BY DNV GL  
= ISO 9001 =